



EPC Outreach decided to designate \$1000 to **PDA Disaster Relief for Helene response**, and encourages the congregation to give too.

PRESBYTERIAN DISASTER ASSISTANCE

If you'd like to give via EPC, please note "Helene PDA" in the memo, OR you can give directly:

OUT OF CHAOS. HOPE <https://pda.pcusa.org/situation/hurricane-helene/>

COLLEGE CARE PACKAGES: It is time to send care packages to our EPC college students! THANK YOU to all of you who generously donated so that we can send a new EPC t-shirt to our students. They are going to LOVE the extra surprise! Now, we need some items to fill the rest of the box that will be delivered to them. Below you can find a list of some of the favorites. Once you have shopped, the items can be dropped off in the church office. If you don't want to go out a shop, you can also purchase online and just have it shipped to the church. If you are looking for ideas, you can you the following link to access our Amazon Wishlist. (<https://a.co/e4dn6le>) Please send it ATTN: Kris Adler-Brammer. And if you aren't up for shopping, cash donations are also helpful to purchase those last additional items or help cover the cost of postage (\$17.10 per box shipped).



COLLEGE CARE PACKAGES

- Individual servings of cookies, oatmeal, crackers, etc.
- Mac n Cheese (in the packets), ramen noodles
- Halloween candy, granola bars/protein bars, gum, crystal light/drink powder packages

Laundry pods (non-scented), dryer sheets (non-scented)

Highlighters, pens

Band-aids, cough drops

We will be filling about 25 care packages so items in multiples are appreciated. If you have any questions about donating, please feel free to contact Kris Adler-Brammer at kadlerbrammer@eastridge.org. Please have all items to the church office by Thursday, October 24th so we will have everything to pack them up on Sunday, October 27th.

Eastridge Church Staff

- Rev. Dr. Melodie Jones Pointon.....Senior Pastor
- Rev. Thomas Dummermuth.....Associate Pastor
- Kris Adler-Brammer.....Youth and Children's Ministries
- Donna Gustafson.....Office Manager
- Andy Kalnins.....Night/Weekend Custodian
- Brent Shaw.....Choir Director/Organist
- Will McGuire.....Worship Leader
- Vince Ruhl.....Director of Online Worship
- Brett Meier.....A/V Tech
- Sydney Mitchell.....Nursery attendant
- Laura Siemsen.....Administrative Assistant

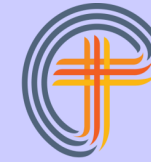
Kristen Unterseher.....Choir Accompanist

Office number.....402-488-7844

Melodie Jones Pointon's extension: 101
email: mjonespointon@eastridge.org



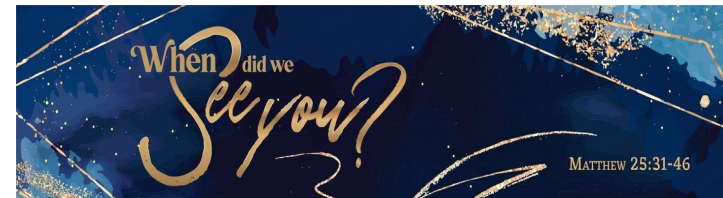
EASTRIDGE
Presbyterian Church



The weekly Lamp

TODAY AT EASTRIDGE—October 13

9:30 am	Worship—Sanctuary and online
10:45 am	JIA—Huxtable Lounge
11:00 am	Session Meeting—M12
1:00 pm	Special Musicians—Huxtable Lounge



TODAY in worship: Pastors: Thomas Dummermuth, Melodie Jones Pointon
Liturgist: Doug McDaniel
Worship Connection: Kris Adler-Brammer
Music: Kirk Ringers, Michael Jha, Will McGuire, Erin-Ann Scott, Brent Shaw

Did you miss our summer sermon series, "Today, I Choose to Believe...."?

Maybe you just want to have another listen?

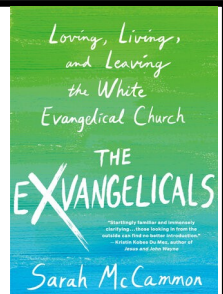
You can find our pastors' sermons on our Eastridge Presbyterian YouTube channel (@eastridgepresbyterian) and Eastridge Presbyterian Church on your favorite podcast platform.



EPC Book Club: Join us October 14 (TOMORROW!) to discuss *The Exvangelicals: Loving, Living, and Leaving the White Evangelical Church* by Sarah McCammon.

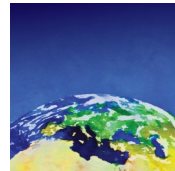
Our book club meets on the second Monday of each month at 7 pm in M12. Find the list online at (link available in online version): [Book-Club-2024-2025-list.pdf](#) (eastridge.org)

October pick: *Awe* by Dacher Keltner





The Green Team continues to monitor energy usage after the LED light replacement project earlier in the summer, and while results are still preliminary, it looks as though the project is already helping keep our usage, and therefore costs, down! The Team installed a first round of motion detector light switches at the top and bottom of the stairway on the front side of the church in mid-September. It was a challenging project, but thanks to Bill Bevans and Kip Illian, it was accomplished! Next, the Team plans placing the next



motion detector light switches in the hallway behind the chancel, the north foyer in the Welcome Center, M12, and in the Library. Timers were also installed in the Foyer, and the Team is working with Wolfe Electric to identify additional energy efficiency projects in the next six months. The Cave (and other storage area) organization project spearheaded by Sara Bevans is being enjoyed by all! Now is a great time to join the team, as there are lots of upcoming opportunities to work on different types of projects!

Eastridge Food Pantry volunteer sign ups:

Distribution: <https://bit.ly/FPDistFood>

Filling boxes: <https://bit.ly/FPFillingBoxes>

Please consider this great opportunity to serve. For more information, contact the church office.



It's back! Join us as we travel along the Sunrise Road! Our podcast guests this fall include Beth Graverholt and Olivia Butts with Justice in Action; Sharon Kandel, PC(USA) Regional Liaison for the Horn of Africa; Michaella Kumke, President and CEO of the Food Bank of Lincoln; Lisa Janssen, Program Administrator at the Gathering Place. The Sunrise Road can be found on the Sunrise Road YouTube channel (@sunriseroad) and all major podcast platforms.

THE GATHERING PLACE: Eastridge Presbyterian Church arranges to provide 4-5 volunteers at The Gathering Place, a local soup kitchen, on the 4th Monday of each month. For more information on what this entails, contact the church office. Thank you to all Eastridge members who volunteer to serve at The Gathering Place. Sign up here: <https://bit.ly/thegatheringplacecurrent>



PRAYERS

Prayers: Condolences to the family of **Lois Coleman**. Lois's memorial service will be held November 1.

Prayers for health concerns: Joel Gustafson.

Contact the church office to be included in our online prayer group or here in the bulletin.



FUND MATCH: For the FIFTH year in a row we have been given a matching gift of \$10,000 through a generous anonymous donor! We are thankful for this generous gift as we enter the season of gratitude, as it encourages giving to the mission and ministry of Eastridge. Please note "fund match" in the memo line (or in the comment section if giving online). You may also email the office to let us know if an online donation is coming from you toward the fund match.



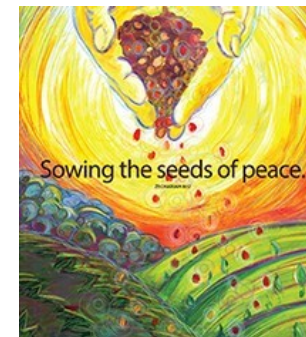
Youth – Each Wednesday evening, youth group begins with a meal.

Providing a meal includes a main dish, side(s), and dessert. The church provides drinks and all the paper products. This year the group will consist of about 12 people. If you are willing to provide a meal, the following link can be used to sign up for a meal for the remainder of the 2024 year. OR: <https://bit.ly/youthmeal2425>



MEMORIAL GIFT:

Have you noticed the new tables on our east patio and garden area? The tables, umbrellas, and benches were gifts from the **DeeAnn Dilley Memorial**.



Peace & Global Witness Offering (Peacemaking): A gift to the Peace & Global Witness Offering enables the church to promote the Peace of Christ by addressing systems of conflict and injustice across the world. Individual congregations are encouraged to utilize up to 25% of this Offering for peacemaking efforts that align with their passion. Mid-councils retain an additional 25% for ministries of peace and reconciliation. The remaining 50% is used by the Presbyterian Mission Agency to advocate for peace and justice in cultures of violence, including our own, through collaborative projects of education and Christian witness. **Eastridge will accept Peace & Global Witness Offerings through Monday, October 14. Envelopes are in the bulletin today!**